

Large Fume Hood Requirement?

Consider the advantages of

Floor Mounted Walk-in Fume Hoods by HEMCO

- Sizes range from 6' to 24' wide, 3' to 8' deep and up to 12' high
- Modular construction for fast on-site erection
- Optional door, floor and exhaust systems
- Wide selection of services and accessories



When specifying your next large fume hood or clean lab project, consider HEMCO Corporation!

Modular Labs & Clean Rooms

Engineered and built to your size and design specifications with optional filtration and environmental control systems.

For Prompt service call: (816) 796-2900



Visit our website at

www.HEMCOcorp.com

HEMCO



- 120 to 300 USWG capacities
- Certified UN T 20 IMO Portable Tanks (DOT 51)
- Stainless or carbon steel construction – 58 psig to 250 psig working pressure
- Pharmaceutical grade tanks
- High purity or industrial linings – insulated tanks
- Tanks can be shipped individually or in groups of ten by van container or flatbed worldwide



Toll Free: 1-888-551-8265

Phone: 281-517-5100 • Fax: 281-517-5101

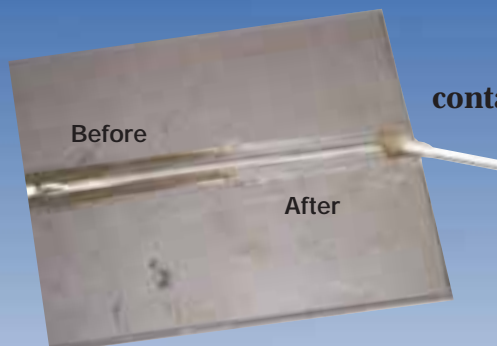
info@tanksolutions.com

www.tanksolutions.com

Stainless Steel Cleaner



Wonder Gel Stainless Steel Pickling Gel



Remove contaminants and improve surface finish.

Even stainless steel can rust if not properly treated. Protect, preserve and restore corrosion resistance to stainless steel equipment. Wonder Gel Stainless Steel Pickling Gel is easy to use and cleans without damaging sound metal surfaces.



PH: Toll Free: 1-877-899-5315
 FX: Toll Free: 1-887-285-2080
www.DERUSTIT.com
 e-mail: derustit@albany.net



Tooling Manufacturing Machinery Sales Used and Refurbished Tablet Presses

Including....

- Stokes
 - Manesty
 - Fette
 - Hafa
 - Baldwin
 - Colton
-and many more in stock.



View Online or Call

Advance Engineering

1 Vance Dr. • O'Fallon, MO 63366

800-467-8444 • www.advanceeng.com